

## Design Manual for Roads and Bridges



Road Layout  
General information

# CG 152

## Traffic signs to tourist destinations and leisure facilities

(formerly TD 52/17)

Revision 0

### Summary

This document provides requirements and advice for the provision of tourist and leisure signs.

### Application by Overseeing Organisations

Any specific requirements for Overseeing Organisations alternative or supplementary to those given in this document are given in National Application Annexes to this document.

### Feedback and Enquiries

Users of this document are encouraged to raise any enquiries and/or provide feedback on the content and usage of this document to the dedicated Highways England team. The email address for all enquiries and feedback is: [Standards\\_Enquiries@highwaysengland.co.uk](mailto:Standards_Enquiries@highwaysengland.co.uk)

**This is a controlled document.**

# Contents

<b>Release notes</b>	<b>2</b>
<b>Foreword</b>	<b>3</b>
Publishing information . . . . .	3
Contractual and legal considerations . . . . .	3
<b>Introduction</b>	<b>4</b>
Background . . . . .	4
Assumptions made in the preparation of this document . . . . .	4
<b>1. Scope</b>	<b>5</b>
Aspects covered . . . . .	5
Implementation . . . . .	5
Use of GG 101 . . . . .	5
<b>2. Normative references</b>	<b>6</b>

## Release notes

Version	Date	Details of amendments
0	Oct 2019	CG 152 replaces TD 52/17. The full document has been re-written to make it compliant with the new Highways England drafting rules.

## **Foreword**

### **Publishing information**

This document is published by Highways England.

This document supersedes TD 52/17, which is withdrawn.

### **Contractual and legal considerations**

This document forms part of the works specification. It does not purport to include all the necessary provisions of a contract. Users are responsible for applying all appropriate documents applicable to their contract.

## **Introduction**

### **Background**

The purpose of tourist and leisure signs is to guide visitors to their intended tourist destination or leisure facility along the most appropriate route during the latter stage of their journey.

### **Assumptions made in the preparation of this document**

The assumptions made in GG 101 [Ref 1.N] apply to this document.

This document is intended to be read by professionals who understand traffic sign design.

## 1. Scope

### Aspects covered

- 1.1 The national requirements for traffic signs to tourist destinations and leisure facilities set out in the National Application Annexes shall be followed.

### Implementation

- 1.2 This document shall be implemented forthwith on all schemes involving proposals for tourist destinations and leisure facilities on the Overseeing Organisations' motorway and all-purpose trunk roads according to the implementation requirements of GG 101 [Ref 1.N].

### Use of GG 101

- 1.3 The requirements contained in GG 101 [Ref 1.N] shall be followed in respect of activities covered by this document.

## 2. Normative references

The following documents, in whole or in part, are normative references for this document and are indispensable for its application. For dated references, only the edition cited applies. For undated references, the latest edition of the referenced document (including any amendments) applies.

Ref 1.N	Highways England. GG 101, 'Introduction to the Design Manual for Roads and Bridges'
---------	---

© Crown copyright 2019.

You may re-use this information (not including logos) free of charge in any format or medium, under the terms of the Open Government Licence. To view this licence:

visit [www.nationalarchives.gov.uk/doc/open-government-licence/](https://www.nationalarchives.gov.uk/doc/open-government-licence/),  
write to the **Information Policy Team, The National Archives, Kew, London TW9 4DU**,  
or email [psi@nationalarchives.gsi.gov.uk](mailto:psi@nationalarchives.gsi.gov.uk).





Road Layout  
General information

## CG 152

# England National Application Annex to CG 152 Traffic signs to tourist destinations and leisure facilities

(formerly TD 52/17)

Revision 0

### Summary

This National Application Annex sets out the Highways England specific requirements for provision of traffic signs to tourist destinations and leisure facilities.

### Feedback and Enquiries

Users of this document are encouraged to raise any enquiries and/or provide feedback on the content and usage of this document to the dedicated Highways England team. The email address for all enquiries and feedback is: [Standards\\_Enquiries@highwaysengland.co.uk](mailto:Standards_Enquiries@highwaysengland.co.uk)

**This is a controlled document.**

# Contents

<b>Release notes</b>	<b>2</b>
<b>Foreword</b>	<b>3</b>
Publishing information . . . . .	3
Contractual and legal considerations . . . . .	3
<b>Introduction</b>	<b>4</b>
Background . . . . .	4
Assumptions made in the preparation of this document . . . . .	4
<b>Abbreviations</b>	<b>5</b>
<b>Terms and definitions</b>	<b>6</b>
<b>E/1. Provision of tourist and leisure signs</b>	<b>7</b>
<b>E/2. Tourist destination and leisure facility criteria</b>	<b>8</b>
Assessment of applications . . . . .	8
Eligibility requirements . . . . .	8
General . . . . .	8
Visitor numbers . . . . .	10
Leisure facilities - specific requirements . . . . .	11
Tourist destinations - specific requirements . . . . .	12
Requirements for accommodating tourist and leisure signs . . . . .	12
<b>E/3. Tourist and leisure signs</b>	<b>14</b>
Information to be included on signs . . . . .	14
Sign continuity . . . . .	15
<b>E/4. Country tours, tourist routes and boundary signs</b>	<b>16</b>
Country tours and tourist routes . . . . .	16
Town or village boundary signs . . . . .	16
Boundary signs with an image . . . . .	16
<b>E/5. Tourist information points (TIPs) and signing for tourist information centres (TICs)</b>	<b>19</b>
<b>E/6. Bypassed community signs</b>	<b>20</b>
Eligibility criteria . . . . .	20
<b>E/7. Review of existing signs</b>	<b>21</b>
Not fit for purpose . . . . .	21
Route alteration . . . . .	21
Closed tourist destinations or leisure facilities . . . . .	21
<b>E/8. Normative references</b>	<b>22</b>

## Release notes

Version	Date	Details of amendments
0	Oct 2019	Highways England National Application Annex to CG 152.

## **Foreword**

### **Publishing information**

This document is published by Highways England.

This document supersedes TD 52/17, which is withdrawn.

### **Contractual and legal considerations**

This document forms part of the works specification. It does not purport to include all the necessary provisions of a contract. Users are responsible for applying all appropriate documents applicable to their contract.

## Introduction

### Background

This National Application Annex gives the Highways England specific requirements for the provision of traffic signs to tourist destinations and leisure facilities in England on motorways and all-purpose trunk roads.

As there is only a limited quantity of information that can be safely read by road users, priority for tourist and leisure signing on the motorway and all-purpose trunk road network is given to tourist destinations and leisure facilities with the greatest traffic management and/or safety needs.

### Assumptions made in the preparation of this document

The assumptions made in GG 101 [Ref 3.N] apply to this document.

This document is intended to be read by professionals who understand traffic sign design.

This document should be read in conjunction with:

- 1) The Traffic Sign Regulations and General Directions ( TSRGD SI2016 No.362 [Ref 7.N]);
- 2) Chapter 7 of the Traffic Signs Manual ( TSM Chapter 7 [Ref 9.N]); and
- 3) Local Transport Note 1/94 ( LTN 1/94 [Ref 4.N]).

## Abbreviations

### Abbreviations

Abbreviation	Definition
DfT	Department for Transport
HHA	Home Highway Authority
TIC	Tourist information centre
TIP	Tourist information point
TSRGD	The Traffic Signs Regulations and General Directions (TSRGD SI2016 No.362 [Ref 7.N])
VE	VisitEngland

## Terms and definitions

### Terms

Term	Definition
Bypassed community signs	Signs that inform road users of the availability of tourist information, local attractions and facilities within a community which is not already signed.
Country tour	A designated route that passes through places of potential interest to tourists and starts and ends at the same location.
Home Highway Authority	The highway authority for the road which provides the main direct access to a tourist destination or leisure facility.
Leisure facility	Is as defined in TSRGD SI2016 No.362 [Ref 7.N]
National promoter of tourism	Is as defined in TSRGD SI2016 No.362 [Ref 7.N]
Not fit for purpose	A sign which no longer fulfils its function i.e. its condition has deteriorated to the extent that it fails to impart the information that was intended, and the cost to repair the assembly of the sign (either foundation, support, sign face or all of these) is considered to be uneconomical by Highways England.
Permanently established	An attraction or facility that is not temporary.
Tourist destination	Is as defined in TSRGD SI2016 No.362 [Ref 7.N].
Tourist information centre	Is as defined in TSRGD SI2016 No.362 [Ref 7.N].
Tourist information point	Is as defined in TSRGD SI2016 No.362 [Ref 7.N].
Tourist route	A designated alternative to the quickest or most direct route to the named destination that passes through places of potential interest to tourists.
VisitEngland	The official tourist board for England.

## **E/1. Provision of tourist and leisure signs**

E/1.1 This document shall be used to assess the eligibility of an application for the provision of tourist and leisure signs on the motorway and all-purpose trunk road network in England.

*NOTE 1 The eligibility criteria for the assessment of applications for tourist and leisure signs are set out in Section E/2.*

*NOTE 2 Meeting the eligibility criteria does not mean that a tourist destination or leisure facility is automatically entitled to tourist or leisure signs. Other factors such as the safe accommodation of signs within the highway are also assessed.*

E/1.1.1 Applications for the provision or alteration of tourist and leisure signs on the motorway and all-purpose trunk road network may be made at any time by the owners, operators or agents of tourist or leisure businesses.

*NOTE 1 All new applications and any resulting works to design, install or alter tourist or leisure signs on motorways and all-purpose trunks roads are funded by the applicants pursuant to section 278 of the Highways Act 1980 ( Act CHAPTER 66 [Ref 2.N]) except where described in Section E/7.*

*NOTE 2 Details of the application process and financial arrangements for tourist and leisure signs permitted under the scope of this document are available from the Overseeing Organisation.*

E/1.2 Tourist and leisure signs must be as prescribed by TSRGD SI2016 No.362 [Ref 7.N] or specially authorised by the Secretary of State.

E/1.3 This document shall not be used to assess the provision of signs to exhibition centres or destinations where retail is the primary function, which is covered in CG 153 [Ref 10.N].

*NOTE Examples of destinations where retail is the primary function include:*

- 1) retail parks;*
- 2) shopping centres; and*
- 3) garden centres.*

E/1.4 Special events (e.g. annual or one-off events) shall not be signed using tourist or leisure signs.

*NOTE Guidance on the signing of special events is contained in Traffic Advisory Leaflet 04/11 [Ref 8.N].*



## E/2. Tourist destination and leisure facility criteria

### Assessment of applications

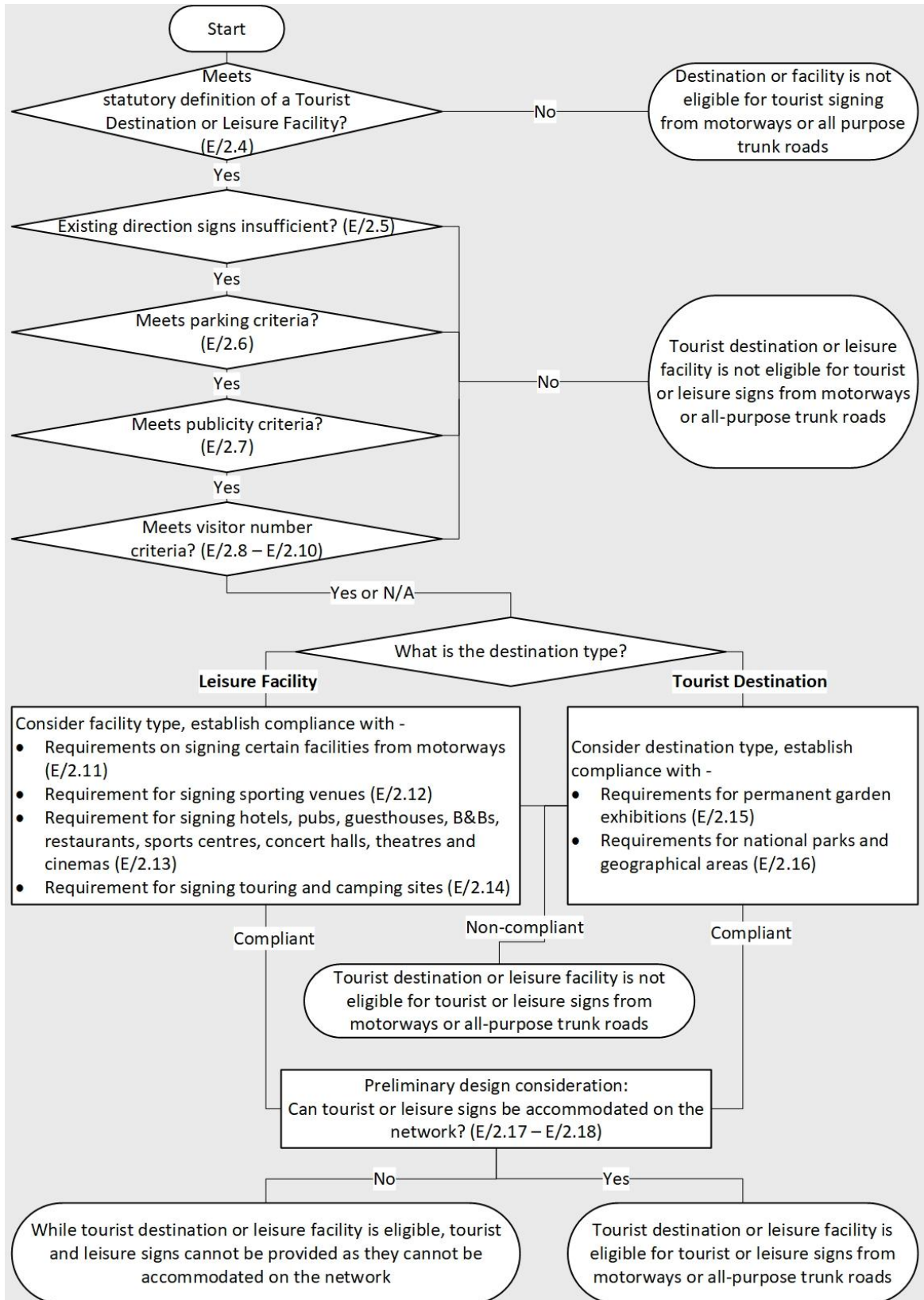
- E/2.1 Applications for tourist and leisure signs shall be assessed based on the case made in accordance with the criteria in this document, including confirmation that the HHA has accepted the case for local road signing (where the main direct access to a tourist destination or leisure facility is from a local highway authority's road).
- E/2.2 In the event of ambiguity regarding a tourist destination or leisure facility's eligibility for tourist or leisure signs from the motorway and all-purpose trunk road network, the owner of this document shall be contacted for advice.
- NOTE *The owner of this document can consult with VE. The owner of this document is the sole contact with VE.*
- E/2.3 Tourist destinations and leisure facilities that have yet to open or have only just opened shall be treated as permanently established tourist destinations and leisure facilities for the purpose of assessing eligibility.

### Eligibility requirements

#### General

- E/2.4 Applications for tourist or leisure signs shall be only be accepted for assessment from:
- 1) tourist destinations that meet the statutory definition of a tourist destination; or
  - 2) leisure facilities that meet the statutory definition of a leisure facility.
- NOTE 1 *The statutory definitions for tourist destinations and leisure facilities for tourist destinations and leisure facilities are contained in TSRGD SI2016 No.362 [Ref 7.N].*
- NOTE 2 *Examples of tourist destinations include tourist information centres, theme parks, historic buildings, museums, zoos, exhibition gardens, nature reserves, areas of special interest, country tours, and tourist routes.*
- NOTE 3 *Examples of leisure facilities include hotels, guesthouses, bed and breakfast establishments, public houses, restaurants, holiday parks, touring and camping parks, picnic areas, sports venues, sports centres, country parks, beaches, and theatre and concert halls.*
- NOTE 4 *A flow chart is provided in Figure E/2.4N4 to assist in determining whether a tourist destination or leisure facility meets the eligibility requirements set out in this document.*

Figure E/2.4N4 Illustrative flowchart - eligibility requirements

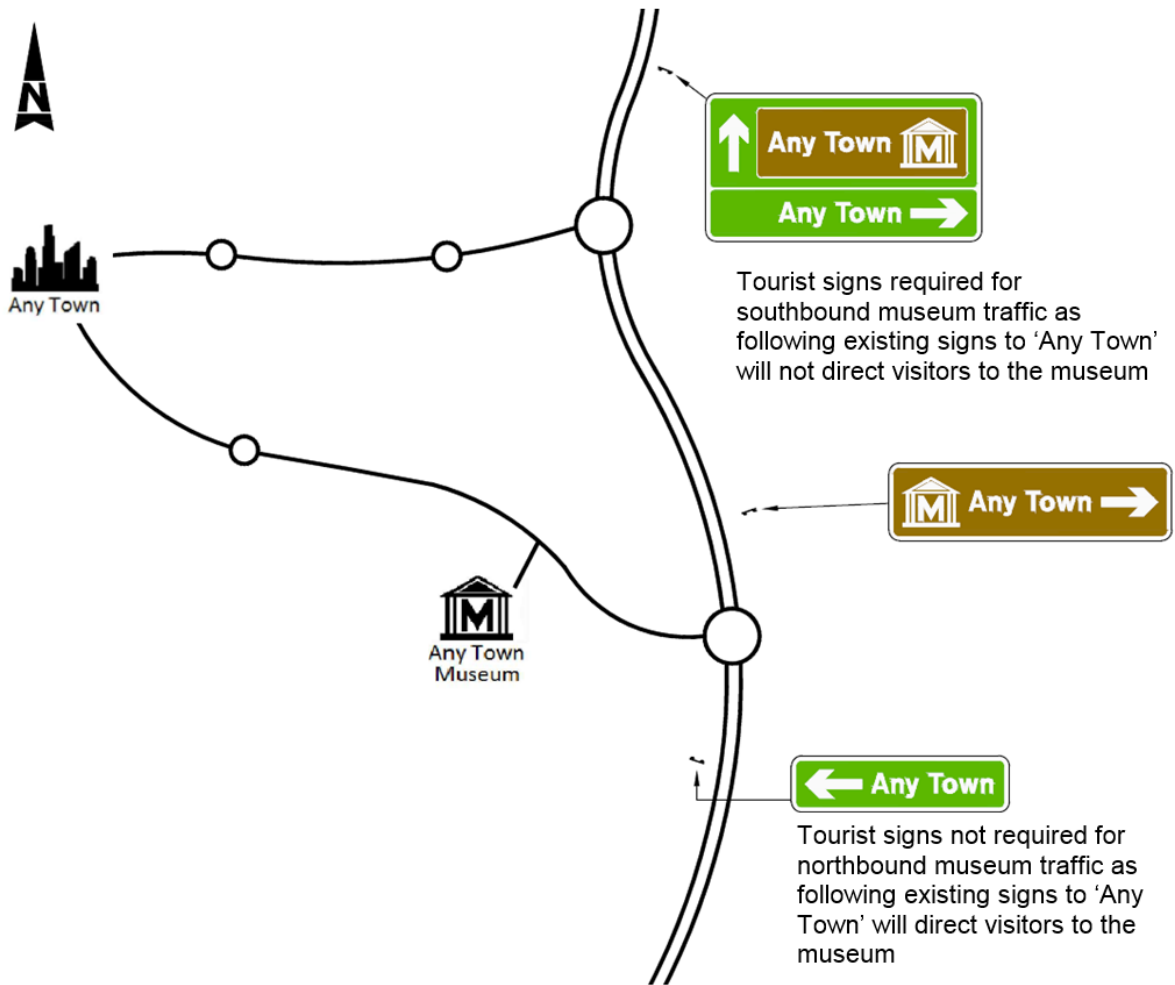


E/2.5 Tourist and leisure signs shall not be provided where a tourist destination or leisure facility can be reached by following existing directional signs from the motorway and all-purpose trunk road network to

a location which appears on the postal address of the tourist destination or leisure facility.

E/2.5.1 Tourist and leisure signs may be provided where the location is signed from multiple junctions and there is a need to identify the appropriate junction to direct visitors to the destination as illustrated in Figure E/2.5.1.

Figure E/2.5.1 Network signing differing by approach route - illustration



NOTE Figure E/2.5.1 depicts an example scenario, where those seeking Any Town museum and approaching from the south can find the tourist destination by following existing directional signs to Any Town. This is not the case for those approaching from the north, where tourism signs can be appropriate (subject to other factors).

E/2.6 Tourist destinations and leisure facilities shall have parking on site or close by (i.e. within 250m) to accommodate the volume of vehicular traffic expected to visit the destination on a typical day.

E/2.7 Tourist destinations and leisure facilities shall have publicity material which includes information on location.

E/2.7.1 Publicity material may comprise an online presence.

NOTE Publicity material does not include existing roadside advertisements of any type.

Visitor numbers

E/2.8 Minimum visitor number thresholds shall apply to tourist destinations and leisure facilities with the exception of:

- 1) tourist information centres (TICs);
- 2) picnic areas;
- 3) facilities where the primary function is the serving of food and light refreshments; and
- 4) facilities where the primary function is the provision of overnight accommodation.

E/2.9 Minimum visitor number thresholds shall be determined in accordance with Table E/2.9 for the road type where the furthest tourist or leisure sign is proposed.

**Table E/2.9 Minimum visitor number thresholds for tourist and leisure signing to tourist destinations and leisure facilities**

Trunk road type on which the furthest tourist or leisure sign is proposed	Minimum number of visitors required: Either per year or in the peak month	
	Per year	Peak month
Motorways within or adjacent to a settlement with more than 250,000 people, including the M25	250,000	50,000
Other motorways	200,000	40,000
Dual carriageways with grade separated junctions or a speed limit of 50 mph or more	150,000	30,000
Other dual carriageways	100,000	20,000
Single carriageways	40,000	8,000

E/2.9.1 A one step relaxation of the visitor number threshold may be applied for attractions recognised by VE as being of national or regional importance in historical or cultural terms.

NOTE 1 *An example of a one step relaxation is that 'other dual carriageways' visitor numbers (100,000) can be relaxed to the numbers required for single carriageways (40,000).*

NOTE 2 *For single carriageways, a one-step relaxation equates to 26,000 visitors per year or 5,200 visitors in the peak month.*

E/2.10 Visitor number projections as stated in the most recently approved planning application shall be used for a tourist destination or leisure facility that is not yet open.

**Leisure facilities - specific requirements**

E/2.11 The following leisure facilities shall not be signed from motorways:

- 1) hostels;
- 2) hotels or other overnight accommodation;
- 3) picnic areas;
- 4) caravan sites;
- 5) camping sites;
- 6) light refreshment facilities; and
- 7) restaurants.

E/2.12 The following leisure facilities shall be signed from motorways and all-purpose trunk roads using leisure signs only where there are specific local traffic management and safety reasons and the venue is recognised by VE as being of regional or national importance:

- 1) racecourse;
- 2) cricket ground;

- 3) golf course;
- 4) motor sport;
- 5) football ground; and
- 6) rugby ground.

E/2.13 The following leisure facilities shall be signed only if they are located in a settlement of fewer than 10,000 people:

- 1) hotels;
- 2) public houses;
- 3) guesthouses;
- 4) bed and breakfast establishments;
- 5) restaurants;
- 6) sports centres;
- 7) concert halls;
- 8) theatres; and
- 9) cinemas.

E/2.14 To apply for leisure signing, touring and camping sites shall be licensed under:

- 1) the Caravan Sites and Control of Development Act 1960 [Ref 1.N] other than those organisations granted exemption under paragraph 12 of the First Schedule); and/or
- 2) the Public Health Act 1936 [Ref 5.N].

#### **Tourist destinations - specific requirements**

E/2.15 Permanent garden exhibitions shall apply for signing as tourist destinations only if each of the following criteria apply:

- 1) the exhibition qualifies as an eligible tourist destination; and
- 2) the exhibition is recognised by VE as being of regional or national importance in horticultural or arboricultural terms.

E/2.16 National parks and geographical areas shall apply for tourist signing only where each of the following criteria apply:

- 1) traffic is routed to a permanently established tourist information centre;
- 2) the name appears on maps and atlases; and
- 3) the area has signed boundaries.

E/2.16.1 A national park or geographical area may apply for tourist signing if it contains a settlement which has a permanently established tourist information centre.

*NOTE 1 An example of a national park or geographical area that can apply for tourist signing is Swaledale, in which Richmond is situated, and Richmond contains a permanently established TIC. Tourist signing is expected to state "Swaledale and Richmond".*

*NOTE 2 A geographical area is one marketed under a collective theme, e.g. literary or historical connections.*

#### **Requirements for accommodating tourist and leisure signs**

E/2.17 Tourist and leisure signs shall be allowed only where they can be safely accommodated at the roadside.

*NOTE 1 It is not always possible to accommodate tourist and leisure signs because of physical constraints or the number of other destinations requiring signing in the area, which can include regional destinations or other tourist destinations or leisure facilities.*

*NOTE 2* The TSRGD S.I. No. 362 [Ref 6.N] defines the maximum number of destinations that are permitted to be included on specific types of tourist and leisure signs.

E/2.18 Where more than the maximum number of qualifying tourist destinations or leisure facilities seek signing from a particular junction and each of them has an equal traffic management and safety need, the applicant shall consult with the owner of this document.

*NOTE* The owner of this document can consult with the HHA and VE to determine which of the tourist destinations and leisure facilities with equal traffic management and safety needs is signed.

## E/3. Tourist and leisure signs

### Information to be included on signs

E/3.1 Tourist and leisure signs on the motorway and all-purpose trunk road network shall use legends, colours and symbols consistent with continuity signs located (or to be located) on the local road network.

*NOTE* Tourist and leisure signs are not permitted on the motorway and all-purpose trunk road network if they are not consistent with continuity signs or not aligned to TSRGD SI2016 No.362 [Ref 7.N].

E/3.2 Tourist and leisure signs shall direct road users to parking facilities rather than to the tourist destination or leisure facility itself.

E/3.3 Tourist signs for permanent garden exhibitions shall state only the name of the exhibition.

E/3.4 Unless there is no capacity to sign destinations of the same type (e.g. museums) individually on one sign, destinations of the same type shall be signed individually if the routes to them separate.

*NOTE 1* Where multiple destinations of the same type are eligible for signing on the approach to a junction and there is no capacity to sign them all individually, a generic or a plural term, e.g. 'museums' is used.

*NOTE 2* Where a number of eligible tourist destinations and leisure facilities are located in a place or geographical area, the use of collective signing can be beneficial (see Figure E/3.4N2).

**Figure E/3.4N2 Example of collective tourist signing**



E/3.5 A descriptive legend shall not be shown on any part of collective signs.

*NOTE* An example of a descriptive legend is a historic market town.

E/3.5.1 Leisure facilities may be shown on collective signs with the exception of:

- 1) light refreshment facilities;
- 2) restaurants;
- 3) picnic areas; and
- 4) hotels or other overnight accommodation.

E/3.6 Where a tourist destination or leisure facility symbol prescribed in TSRGD S.I. No. 362 [Ref 6.N] is suitable for the type of destination to be signed, the prescribed symbol shall be used.

*NOTE 1* Prescribed symbols are easily recognisable by road users.

*NOTE 2* Reduction of the overall size of tourist and leisure signs is achieved by using a symbol with a tourist destination or leisure facility name on the first sign and then using only the symbol on the continuity signs.

*NOTE 3* The design of continuity signs placed on a route after the point at which the destination associated with the symbol has already been established makes the destination clear to road users.

*NOTE 4* Where it is intended to show the destination name on all of the signs, the omission of the symbol can minimise sign information overload.

### **Sign continuity**

E/3.7 There shall be continuity of signing from the furthest sign to the destination.

E/3.8 Where a tourist destination or leisure facility is accessed from the local road network, it shall only be signed from the motorway and all-purpose trunk road network if continuity signing has been or can be provided on the local road network between the trunk road and the tourist destination or leisure facility.

E/3.8.1 Tourist and leisure signing should not extend more than 3 miles from the tourist destination or leisure facility (the 3 miles being that travelled by the road user from the first junction that is signed to the destination).

E/3.9 The distance between the tourist destination or leisure facility and the furthest tourist and leisure sign shall be determined by traffic management needs, where the tourist destination or leisure facility is:

- 1) located in a settlement of fewer than 10,000 people; and
- 2) receiving more than double the number of visitors specified in Table E/2.9.



## E/4. Country tours, tourist routes and boundary signs

### Country tours and tourist routes

E/4.1 Country tours and tourist routes shall not be signed from motorways.

E/4.2 Country tours and tourist routes shall meet the definition given in Terms and definitions in order to be assessed for signing on all-purpose trunk roads.

**NOTE 1** Country tours and tourist routes allow for the strategic routeing of traffic through specific areas and places of interest where it is considered important to encourage tourism.

**NOTE 2** Examples of signing for country tours and tourist routes are shown in Figures E/4.2N2a and E/4.2N2b.

**Figure E/4.2N2a Example of country tour sign**



**Figure E/4.2N2b Example of tourist route sign**



### Town or village boundary signs

E/4.3 Town and village boundary signs shall depict the name of the town or village.

E/4.3.1 Town and village boundary signs should be placed at or close to the boundary, or on the approach to the built up area.

E/4.4 Only symbols for tourist destinations or leisure facilities that individually achieve the eligibility criteria set out in Section E/2 shall be included on town or village boundary signs.

E/4.5 Symbols depicting light refreshment facilities, restaurants, picnic areas and hotels or other overnight accommodation shall not be included on town or village boundary signs.

**NOTE** The sign shown in Figure E/4.5N is a boundary sign that permits the inclusion of a brown panel displaying tourist and leisure symbols.

**Figure E/4.5N Example of a town or village boundary sign with tourism information**



**Boundary signs with an image**

E/4.6 Where boundary signs with an image are proposed, these shall be placed at or close to the boundary or, in the case of a city, town or village, on the approach to the built up area.

*NOTE* Boundary signs with an image comprise a brown panel with white text and a full colour image depicting a local landmark (see Figure E/4.6N).

**Figure E/4.6N Example of a boundary sign with an image**



E/4.7 Historic county areas shall not be depicted using boundary signs with an image.

E/4.8 Any existing boundary signs shall be removed prior to the installation of boundary signs with an image.

E/4.9 Any image to be used on a boundary sign with an image shall first be submitted to the owner of this document.

*NOTE* The document owner uses criteria when assessing the eligibility of applications for use of an image, such as whether it is:

- 1) a landmark;
- 2) iconic and unique to the area to be signed;
- 3) easily recognisable; and

- 4) *to a level of detail that would allow it to be clearly visible by passing motorists if used on a traffic sign.*

## **E/5. Tourist information points (TIPs) and signing for tourist information centres (TICs)**

E/5.1 TIPs shall not be signed from motorways or all-purpose trunk roads.

E/5.2 TICs shall be eligible for tourist signing from motorways and all-purpose trunk roads, provided that:

- 1) parking capacity is available at the TIC or nearby within 250m; and
- 2) information on nearby accommodation is available outside of opening hours.

*NOTE 1 TICs have the potential to direct road users to a range of regional tourist destinations and leisure facilities, which offers benefits in terms of traffic management and safety and the economic development of tourism and leisure facilities in an area.*

*NOTE 2 The "i" symbol in Figure E/5.3 is always associated with a TIC.*

E/5.3 Where prescribed by TSRGD SI2016 No.362 [Ref 7.N] initial signs to TICs shall display the legend 'Tourist information centre' and the associated "i" symbol as shown in Figure E/5.3.

**Figure E/5.3 Example of a tourist information centre sign**



## E/6. Bypassed community signs

### Eligibility criteria

E/6.1 Bypassed community signs shall not be placed on motorways.

*NOTE Bypassed community signs inform road users of the availability of tourist information as well as local tourist destination and leisure facilities.*

E/6.1.1 Bypassed community signs, as shown in Figure E/6.1.1, may be placed on all-purpose trunk roads.

Figure E/6.1.1 Example of a bypassed community sign



E/6.2 Bypassed community signs shall not be permitted for a community that is already signed from an all-purpose trunk road.

E/6.3 The addition of bypassed community signs shall not be permitted if they duplicate information given on other signs.

E/6.4 Bypassed community signs shall be used only if the following criteria are met:

- 1) the sign relates to a small town or village with a population of less than 10,000; and
- 2) there is a TIC plus at least one tourist destination or leisure facility eligible under the criteria contained within this document.

E/6.5 Bypassed community signs shall not be used where it is more appropriate to use "local facilities" signing, i.e. where there is no TIC or eligible tourist destinations or leisure facilities.

*NOTE A local facilities sign is shown in Figure E/6.5N.*

Figure E/6.5N Example of a local facilities sign



## **E/7. Review of existing signs**

### **Not fit for purpose**

- E/7.1 Where a tourist or leisure sign is not fit for purpose, the sign shall only be replaced where the owners of the tourist destination or leisure facility submit up to date information in accordance with the eligibility requirements in this document.
- E/7.2 Where the owner of the tourist destination or leisure facility fails to provide up to date information, or if the up to date information fails to demonstrate eligibility, then the tourist destination or leisure facility shall no longer be eligible for tourist or leisure signs.
- E/7.3 Where a tourist or leisure sign is removed and was part of a series of signs to a destination, i.e. a continuity sign, then all directions to the tourist destination or leisure facility shall also be removed.

### **Route alteration**

- E/7.4 Where a route is to be altered to the extent that it affects the eligibility of a tourist destination or leisure facility (such as the upgrade of a single carriageway to a dual carriageway), the scheme responsible for the alterations shall contact the tourist destination or leisure facility to discuss ongoing eligibility on the altered route.
- E/7.5 Where the tourist destination remains eligible, the installation and maintenance costs of the new signs on motorways and all-purpose trunk roads shall be met by the scheme responsible for altering the route.

### **Closed tourist destinations or leisure facilities**

- E/7.6 Where a tourist destination or leisure facility has permanently closed, signs directing road users to such destinations shall not be permitted to remain.
- E/7.6.1 Where the sign only directs traffic to the closed tourist destination, it should be removed.
- E/7.6.2 Where the sign directs traffic to other destinations as well as the closed destination, it should be replaced or have the appropriate legend(s) covered up.

## E/8. Normative references

The following documents, in whole or in part, are normative references for this document and are indispensable for its application. For dated references, only the edition cited applies. For undated references, the latest edition of the referenced document (including any amendments) applies.

Ref 1.N	'Caravan Sites and Control of Development Act 1960'
Ref 2.N	The National Archives. legislation.gov.uk. Act CHAPTER 66, 'Highways Act 1980'
Ref 3.N	Highways England. GG 101, 'Introduction to the Design Manual for Roads and Bridges'
Ref 4.N	The Stationery Office. LTN 1/94, 'Local Transport Note 1/94 - The design of directional informatory signs'
Ref 5.N	'Public Health Act 1936'
Ref 6.N	The Stationery Office. TSRGD S.I. No. 362, 'The Traffic Signs Regulations and General Directions 2016'
Ref 7.N	The National Archives. legislation.gov.uk. TSRGD SI2016 No.362, 'The Traffic Signs Regulations and General Directions 2016'
Ref 8.N	DfT. 'Traffic Advisory Leaflet 04/11 - Temporary Traffic Signs for Special Events'
Ref 9.N	The Stationery Office. TSM Chapter 7, 'Traffic Signs Manual Chapter 7 - The Design of Traffic Signs'
Ref 10.N	Highways England. CG 153, 'Traffic signs to retail destinations and exhibition centres'

© Crown copyright 2019.

You may re-use this information (not including logos) free of charge in any format or medium, under the terms of the Open Government Licence. To view this licence:

visit [www.nationalarchives.gov.uk/doc/open-government-licence/](https://www.nationalarchives.gov.uk/doc/open-government-licence/),  
write to the **Information Policy Team, The National Archives, Kew, London TW9 4DU**,  
or email [psi@nationalarchives.gsi.gov.uk](mailto:psi@nationalarchives.gsi.gov.uk).





Road Layout  
General information

## CG 152

# Northern Ireland National Application Annex to CG 152 Traffic signs to tourist destinations and leisure facilities

(formerly TD 52/17)

Revision 0

### **Summary**

This National Application Annex sets out the Department for Infrastructure Northern Ireland specific requirements for provision of traffic signs to tourist destinations and leisure facilities.

### **Feedback and Enquiries**

Users of this document are encouraged to raise any enquiries and/or provide feedback on the content and usage of this document to the dedicated team in the Department for Infrastructure, Northern Ireland. The email address for all enquiries and feedback is: [dcu@infrastructure-ni.gov.uk](mailto:dcu@infrastructure-ni.gov.uk)

**This is a controlled document.**

# Contents

<b>Release notes</b>	<b>2</b>
<b>Foreword</b>	<b>3</b>
Publishing information . . . . .	3
Contractual and legal considerations . . . . .	3
<b>Introduction</b>	<b>4</b>
Background . . . . .	4
Assumptions made in the preparation of this document . . . . .	4
<b>NI/1. Provision of tourist and leisure signs</b>	<b>5</b>
<b>NI/2. Normative references</b>	<b>6</b>

## Release notes

Version	Date	Details of amendments
0	Oct 2019	Department for Infrastructure Northern Ireland National Application Annex to CG 152.

## **Foreword**

### **Publishing information**

This document is published by Highways England on behalf of Department for Infrastructure, Northern Ireland.

This document supersedes TD 52/17, which is withdrawn.

### **Contractual and legal considerations**

This document forms part of the works specification. It does not purport to include all the necessary provisions of a contract. Users are responsible for applying all appropriate documents applicable to their contract.

## Introduction

### Background

This National Application Annex gives the Department for Infrastructure Northern Ireland specific requirements for the provision of traffic signs to tourist destinations and leisure facilities.

### Assumptions made in the preparation of this document

The assumptions made in GG 101 [Ref 1.N] apply to this document.

This document is intended to be read by professionals who understand traffic sign design.

This document should be read in conjunction with:

- 1) Traffic Signs Regulations (Northern Ireland) [Ref 4.N];
- 2) Chapter 7 of the Traffic Signs Manual ( TSM Chapter 7 [Ref 3.N]).

**NI/1. Provision of tourist and leisure signs**

NI/1.1 Applicants requiring the provision of either tourist or leisure signs shall contact the Department for Infrastructure Northern Ireland for advice.

*NOTE Further information on the provision of tourist signs can also be obtained by referring to the Department for Infrastructure's policy and procedure guide RSPPG E029 The signing of tourist attractions and facilities [Ref 2.N].*

## NI/2. Normative references

The following documents, in whole or in part, are normative references for this document and are indispensable for its application. For dated references, only the edition cited applies. For undated references, the latest edition of the referenced document (including any amendments) applies.

Ref 1.N	Highways England. GG 101, 'Introduction to the Design Manual for Roads and Bridges'
Ref 2.N	<a href="https://www.infrastructure-ni.gov.uk">https://www.infrastructure-ni.gov.uk</a> . 'RSPPG E029 The signing of tourist attractions and facilities'
Ref 3.N	The Stationery Office. TSM Chapter 7, 'Traffic Signs Manual Chapter 7 - The Design of Traffic Signs'
Ref 4.N	TSO. 'Traffic Signs Regulations (Northern Ireland)'

© Crown copyright 2019.

You may re-use this information (not including logos) free of charge in any format or medium, under the terms of the Open Government Licence. To view this licence:

visit [www.nationalarchives.gov.uk/doc/open-government-licence/](http://www.nationalarchives.gov.uk/doc/open-government-licence/),  
write to the **Information Policy Team, The National Archives, Kew, London TW9 4DU**,  
or email [psi@nationalarchives.gsi.gov.uk](mailto:psi@nationalarchives.gsi.gov.uk).





Road Layout  
General information

## CG 152

# Scotland National Application Annex to CG 152 Traffic signs to tourist destinations and leisure facilities

(formerly TD 52/17)

Revision 0

### Summary

This National Application Annex sets out the Transport Scotland specific requirements for provision of traffic signs to tourist destinations and leisure facilities.

### Feedback and Enquiries

Users of this document are encouraged to raise any enquiries and/or provide feedback on the content and usage of this document to the dedicated Transport Scotland team. The email address for all enquiries and feedback is: [TSSStandardsBranch@transport.gov.scot](mailto:TSSStandardsBranch@transport.gov.scot)

**This is a controlled document.**

# Contents

<b>Release notes</b>	<b>2</b>
<b>Foreword</b>	<b>3</b>
Publishing information . . . . .	3
Contractual and legal considerations . . . . .	3
<b>Introduction</b>	<b>4</b>
Background . . . . .	4
Assumptions made in the preparation of this document . . . . .	4
<b>S/1. Provision of tourist and leisure signs</b>	<b>5</b>
<b>S/2. Normative references</b>	<b>6</b>

## Release notes

Version	Date	Details of amendments
0	Oct 2019	Transport Scotland National Application Annex to CG 152.

## **Foreword**

### **Publishing information**

This document is published by Highways England on behalf of Transport Scotland.

This document supersedes TD 52/17, which is withdrawn.

### **Contractual and legal considerations**

This document forms part of the works specification. It does not purport to include all the necessary provisions of a contract. Users are responsible for applying all appropriate documents applicable to their contract.

## Introduction

### Background

This National Application Annex gives the Transport Scotland specific requirements for the provision of traffic signs to tourist destinations and leisure facilities on motorways and trunk roads.

As there is only a limited quantity of information that can be safely read by road users, priority for tourist and leisure signing on the motorway and trunk road network is given to tourist destinations and leisure facilities with the greatest traffic management and/or safety needs.

### Assumptions made in the preparation of this document

The assumptions made in GG 101 [Ref 1.N] apply to this document.

This document is intended to be read by professionals who understand traffic sign design.

This document should be read in conjunction with:

- 1) The Traffic Sign Regulations and General Directions 2016 ( TSRGD SI2016 No.362 [Ref 4.N]);
- 2) Chapter 7 of the Traffic Signs Manual ( TSM Chapter 7 [Ref 5.N]);
- 3) Local Transport Note 1/94 ( LTN 1/94 [Ref 2.N]).

**S/1. Provision of tourist and leisure signs**

- S/1.1 The provision of tourist and leisure signs shall be in accordance with the requirements of Scotland: Trunk Road and Motorway - Tourist Signposting Policy and Guidance [Ref 3.N].

## S/2. Normative references

The following documents, in whole or in part, are normative references for this document and are indispensable for its application. For dated references, only the edition cited applies. For undated references, the latest edition of the referenced document (including any amendments) applies.

Ref 1.N	Highways England. GG 101, 'Introduction to the Design Manual for Roads and Bridges'
Ref 2.N	The Stationery Office. LTN 1/94, 'Local Transport Note 1/94 - The design of directional informatory signs'
Ref 3.N	Transport Scotland. 'Scotland: Trunk Road and Motorway - Tourist Signposting Policy and Guidance'
Ref 4.N	The National Archives. legislation.gov.uk. TSRGD SI2016 No.362, 'The Traffic Signs Regulations and General Directions 2016'
Ref 5.N	The Stationery Office. TSM Chapter 7, 'Traffic Signs Manual Chapter 7 - The Design of Traffic Signs'

© Crown copyright 2019.

You may re-use this information (not including logos) free of charge in any format or medium, under the terms of the Open Government Licence. To view this licence:

visit [www.nationalarchives.gov.uk/doc/open-government-licence/](https://www.nationalarchives.gov.uk/doc/open-government-licence/),  
write to the **Information Policy Team, The National Archives, Kew, London TW9 4DU**,  
or email [psi@nationalarchives.gsi.gov.uk](mailto:psi@nationalarchives.gsi.gov.uk).





Road Layout  
General information

## CG 152

# Wales National Application Annex to CG 152 Traffic signs to tourist destinations and leisure facilities

(formerly TD 52/17)

Revision 0

### Summary

This National Application Annex sets out the Welsh Government specific requirements for provision of traffic signs to tourist destinations and leisure facilities.

### Feedback and Enquiries

Users of this document are encouraged to raise any enquiries and/or provide feedback on the content and usage of this document to the dedicated Welsh Government team. The email address for all enquiries and feedback is: [Standards\\_Feedback\\_and\\_Enquiries@gov.wales](mailto:Standards_Feedback_and_Enquiries@gov.wales)

**This is a controlled document.**

# Contents

<b>Release notes</b>	<b>2</b>
<b>Foreword</b>	<b>3</b>
Publishing information . . . . .	3
Contractual and legal considerations . . . . .	3
<b>Introduction</b>	<b>4</b>
Background . . . . .	4
Assumptions made in the preparation of this document . . . . .	4
<b>W/1. Provision of tourist and leisure signs</b>	<b>5</b>
<b>W/2. Normative references</b>	<b>6</b>

## Release notes

Version	Date	Details of amendments
0	Oct 2019	Welsh Government National Application Annex to CG 152.

## **Foreword**

### **Publishing information**

This document is published by Highways England on behalf of the Welsh Government.

This document supersedes TD 52/17, which is withdrawn.

### **Contractual and legal considerations**

This document forms part of the works specification. It does not purport to include all the necessary provisions of a contract. Users are responsible for applying all appropriate documents applicable to their contract.

## Introduction

### Background

This National Application Annex gives the Welsh Government specific requirements for the provision of traffic signs to tourist destinations and leisure facilities on motorways and all-purpose trunk roads.

As there is only a limited quantity of information that can be safely read by road users, priority for tourist and leisure signing on the motorway and all-purpose trunk road network is given to tourist destinations and leisure facilities with the greatest traffic management and/or safety needs.

### Assumptions made in the preparation of this document

The assumptions made in GG 101 [Ref 1.N] apply to this document.

This document is intended to be read by professionals who understand traffic sign design.

This document should be read in conjunction with:

- 1) The Traffic Sign Regulations and General Directions 2016 ( TSRGD SI2016 No.362 [Ref 3.N]);
- 2) Chapter 7 of the Traffic Signs Manual ( TSM Chapter 7 [Ref 5.N]); and
- 3) Local Transport Note 1/94 ( LTN 1/94 [Ref 2.N]).

**W/1. Provision of tourist and leisure signs**

- W/1.1 The provision of tourist and leisure signs shall be in accordance with the requirements of Traffic Signs for Tourist Destinations on Trunk Roads and Motorways in Wales – Guidance for the Tourism Industry WG19554/G/MH/4894/ [Ref 4.N].

## W/2. Normative references

The following documents, in whole or in part, are normative references for this document and are indispensable for its application. For dated references, only the edition cited applies. For undated references, the latest edition of the referenced document (including any amendments) applies.

Ref 1.N	Highways England. GG 101, 'Introduction to the Design Manual for Roads and Bridges'
Ref 2.N	The Stationery Office. LTN 1/94, 'Local Transport Note 1/94 - The design of directional informatory signs'
Ref 3.N	The National Archives. legislation.gov.uk. TSRGD SI2016 No.362, 'The Traffic Signs Regulations and General Directions 2016'
Ref 4.N	Welsh Government. WG19554/G/MH/4894/ , 'Traffic Signs for Tourist Destinations on Trunk Roads and Motorways in Wales – Guidance for the Tourism Industry'
Ref 5.N	The Stationery Office. TSM Chapter 7, 'Traffic Signs Manual Chapter 7 - The Design of Traffic Signs'

© Crown copyright 2019.

You may re-use this information (not including logos) free of charge in any format or medium, under the terms of the Open Government Licence. To view this licence:

visit [www.nationalarchives.gov.uk/doc/open-government-licence/](https://www.nationalarchives.gov.uk/doc/open-government-licence/),  
write to the **Information Policy Team, The National Archives, Kew, London TW9 4DU**,  
or email [psi@nationalarchives.gsi.gov.uk](mailto:psi@nationalarchives.gsi.gov.uk).