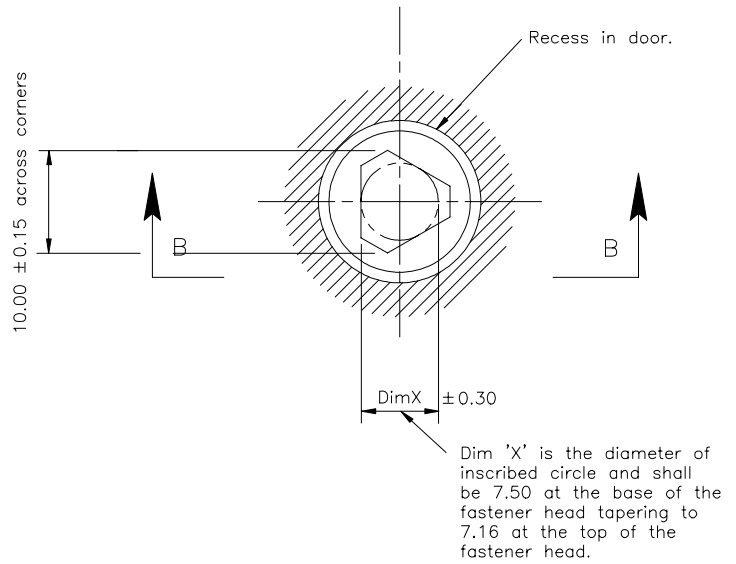
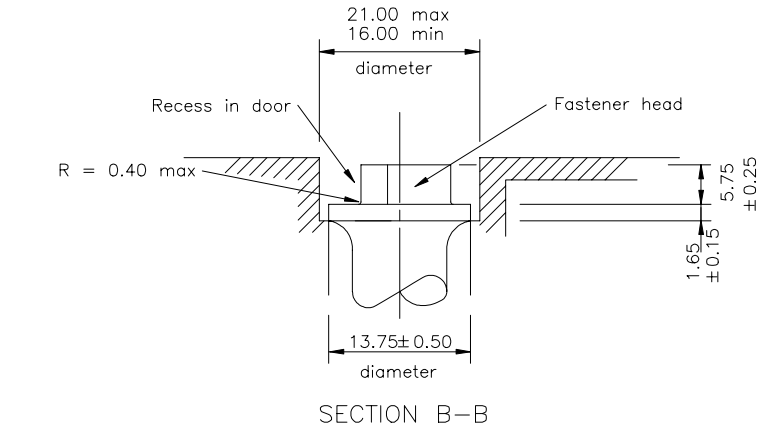
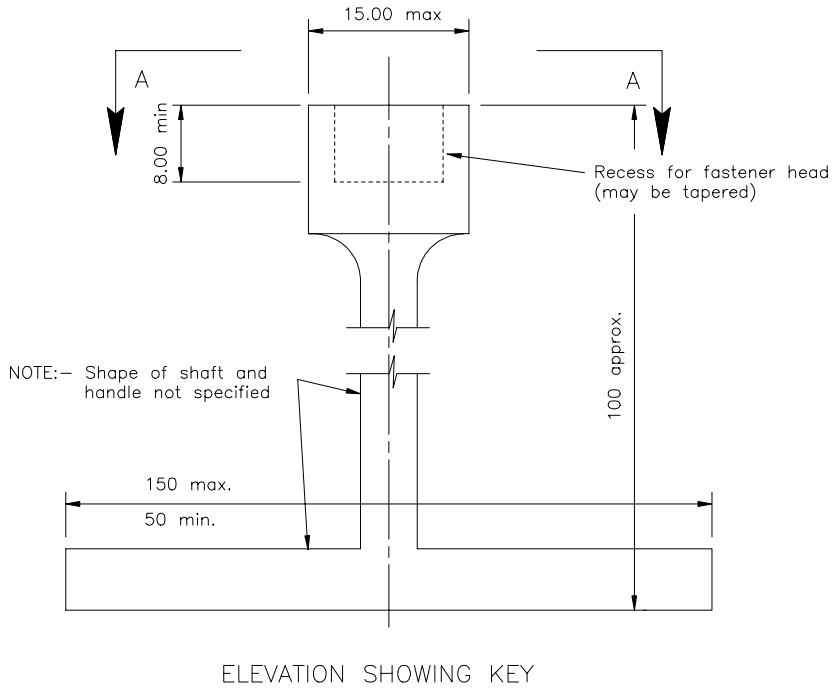
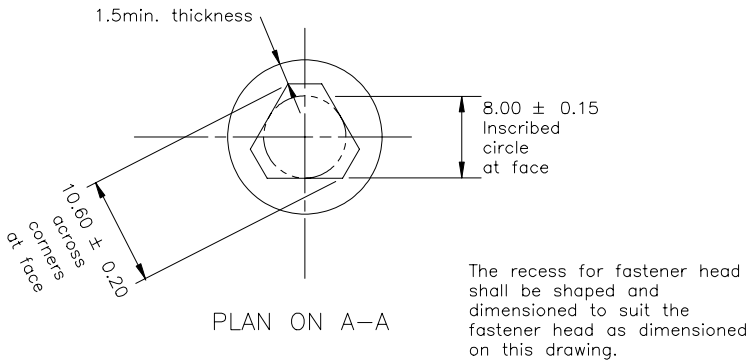
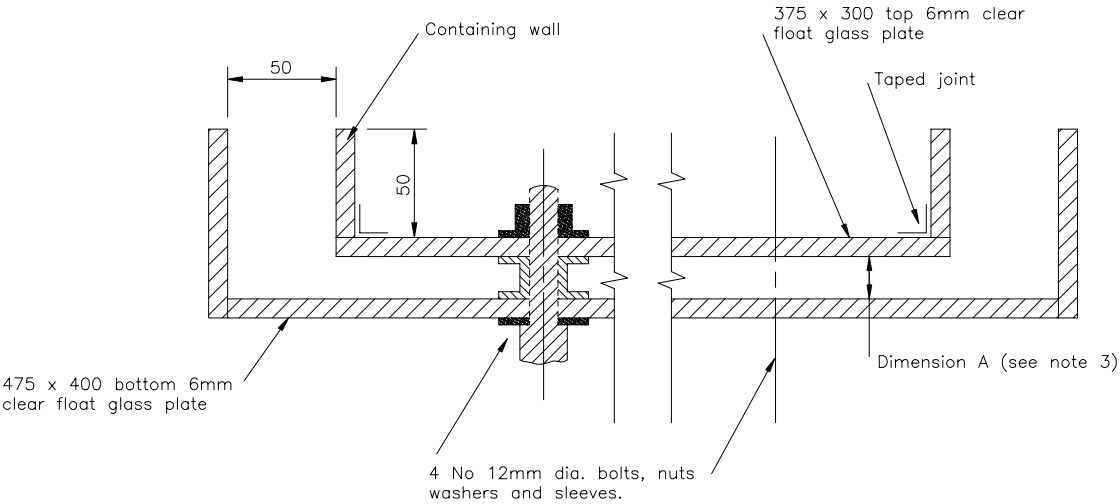


- NOTES: 1. All dimensions are in millimetres.
2. The key shall be capable of releasing without damage all tri-head fasteners as dimensioned on this drawing.



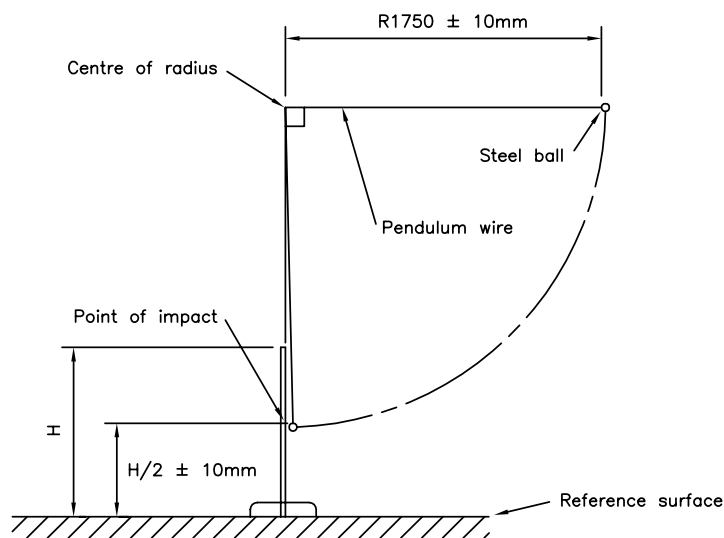
| | | | | | |
|------------------------------|---------------|-------|--------|--|-------------|
| HIGHWAY CONSTRUCTION DETAILS | MISCELLANEOUS | | | ROAD LIGHTING COLUMNS-FASTENER HEAD IN DOOR RECESS AND KEY | Drawing No. |
| | | A | DEC 91 | | K1 |
| | | Issue | Date | | |



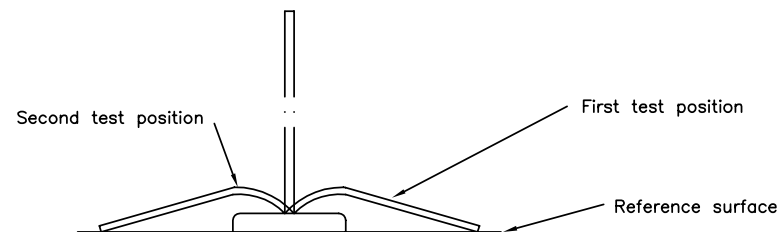
NOTES:

- 1. This apparatus is to be used for the test described in Clause 2601.4(iii).
- 2. Dimension A is 10mm for grouts appropriate to plinth height 10–25mm and 20mm for grouts appropriate to plinth height 20–50mm.
- 3. Grout is to be mixed and poured using the Contractor's proposed site method until it reaches the underside of the top plate and has risen up the containing walls to a depth of at least 10mm.
- 4. Plates are to be horizontal during pouring and curing, and are not to be moved once pouring has commenced until dismantling.
- 5. All dimensions are in mm.

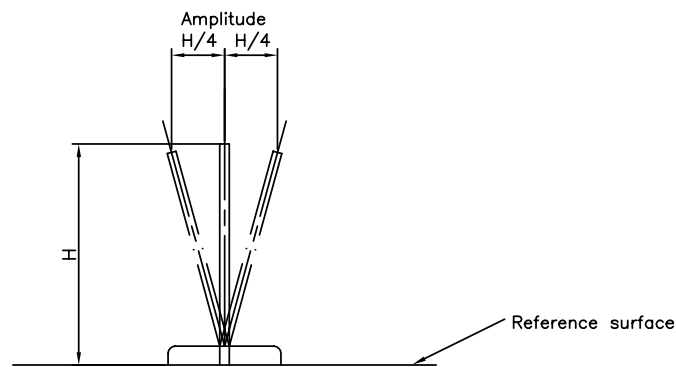
| | | | | | |
|------------------------------|---------------|-------|--------|--|-------------|
| HIGHWAY CONSTRUCTION DETAILS | MISCELLANEOUS | | | BEDDING MORTAR TEST APPARATUS FOR FLOW BETWEEN GLASS PLATES | Drawing No. |
| | | A | DEC 91 | | K2 |
| | | Issue | Date | | |



APPARATUS FOR LOW TEMPERATURE IMPACT TEST
ON FLAT TRAFFIC DELINEATOR

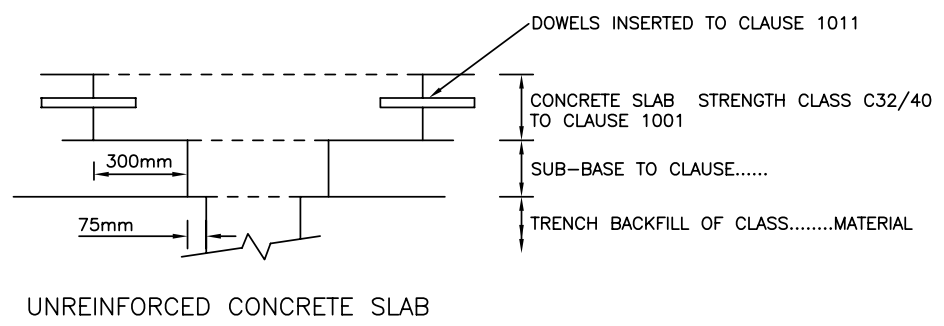
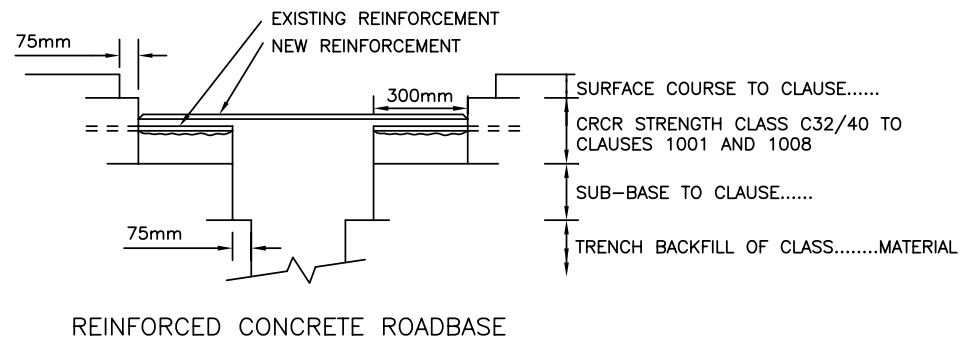
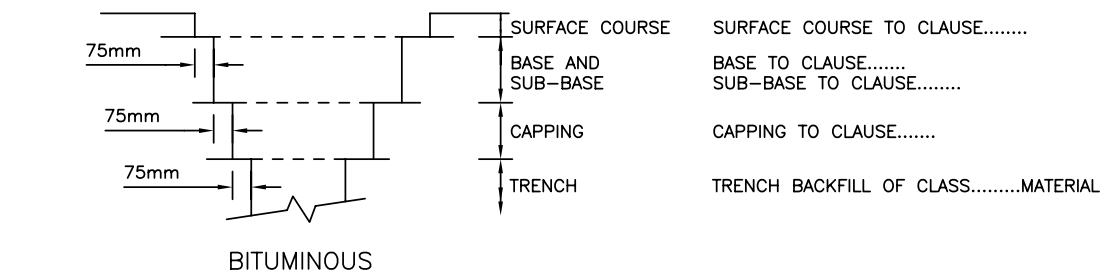


MOVEMENT OF FLAT TRAFFIC DELINEATOR IN
BENDING TEST

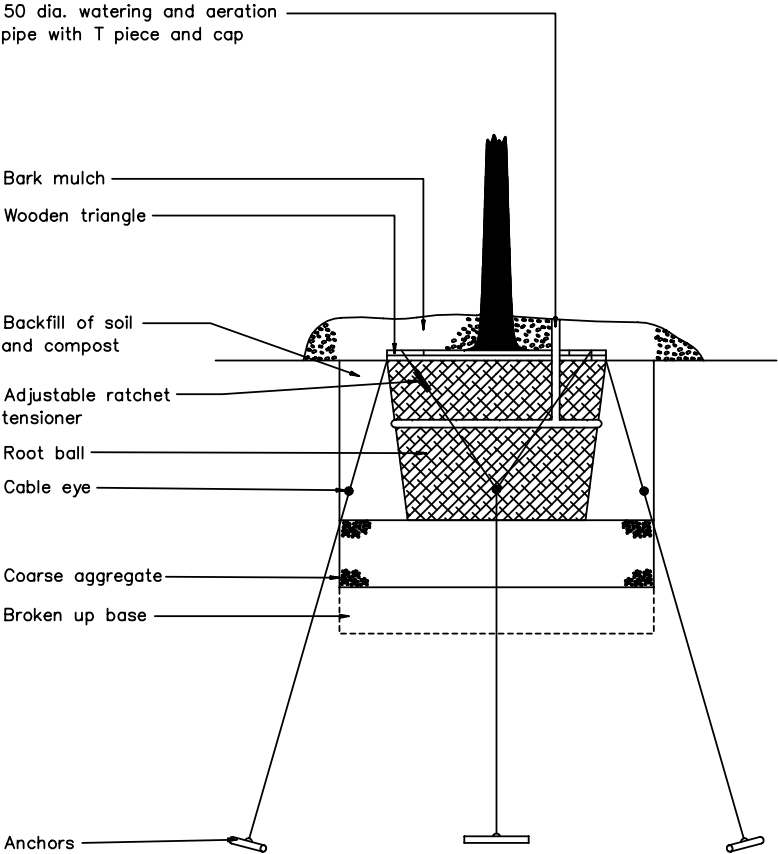
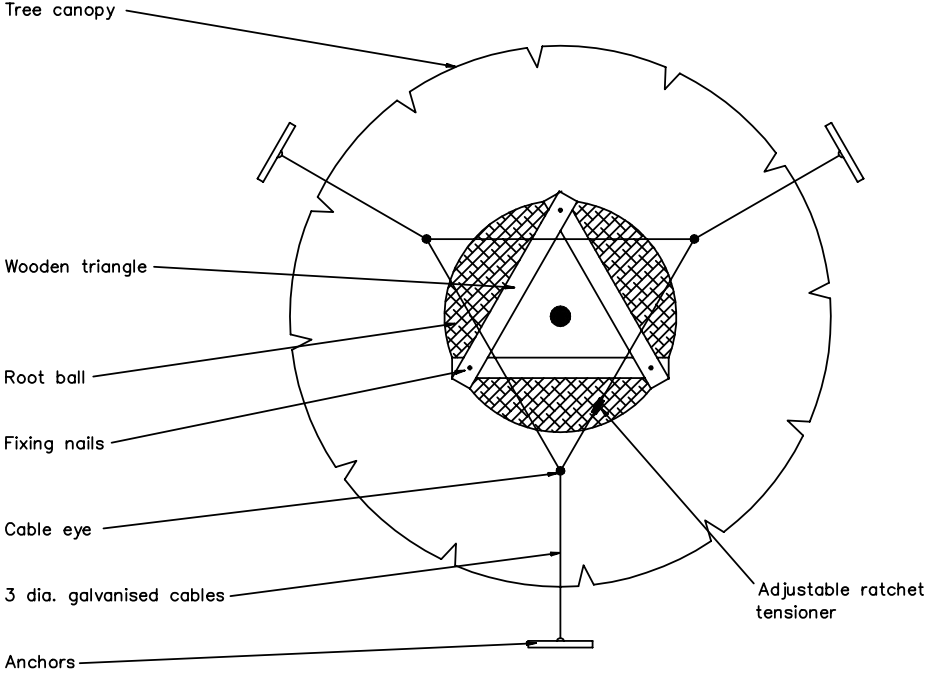


MOVEMENT OF FLAT TRAFFIC DELINEATOR IN FATIGUE TEST

| | | | | | |
|------------------------------|---------------|-------|--------|---|-------------|
| HIGHWAY CONSTRUCTION DETAILS | MISCELLANEOUS | | | FLAT TRAFFIC DELINEATOR TEST DETAILS | Drawing No. |
| | | A | DEC 91 | | K3 |
| | | Issue | Date | | |
| | | | | | |



| | | | | | |
|------------------------------|---------------|-------|--------|--|-------------|
| HIGHWAY CONSTRUCTION DETAILS | MISCELLANEOUS | C | MAY 04 | TYPICAL TRENCH REINSTATEMENT DETAILS FOR BITUMINOUS AND CONCRETE PAVEMENTS | Drawing No. |
| | | B | MAY 02 | | |
| | | A | DEC 91 | | K4 |
| | | Issue | Date | | |



SECTION THROUGH PLANTING PIT

- NOTES
- 1. Dimensions of planting pit varies.
 - 2. ALL DIMENSIONS ARE IN MILLIMETRES UNLESS OTHERWISE STATED.

| | | | | | |
|------------------------------|---------------|-------|--------|--|-------------|
| HIGHWAY CONSTRUCTION DETAILS | MISCELLANEOUS | A | MAY 01 | PLANTING DETAILS FOR PLANTING LARGE TREES | Drawing No. |
| | | P1 | MAR 95 | | K5 |
| | | Issue | Date | | |